



# Production Crimpers

Innovative, productive and durable.



## Greaseless

Slide bearings on the crimp tool improve efficiency up to 20%, reduce friction and help keep the tool free of contaminants.



## Universal

For all types of hoses and fittings.



## Fixed 6-o'clock die

Stationary bottom die for efficient positioning of the product.



## Low Noise

Very quiet hydraulic system.



## Ergonomic

Ease of operator use for maximum productivity.





COMPLEX

HM 665





Due to its narrow and innovative construction, high level of user friendliness, and long service life, the HM 3 H sets new standards for quality and cost effectiveness. Thanks to its compact construction, it allows easy, uncomplicated, and “fast” crimping. The intuitive UNIFLEX Software on the convenient CONTROL C.2 Touch completes the HM 3 H and ensures product quality.



HM 3 H

### Engineered solutions using quality components

- Smaller machine increases ergonomics
- Full length of fittings crimped in one stroke increases product quality and production efficiency
- Noiseless high-quality pump

### Slide bearing technology

- No greasing improves cleanliness of machine and prolongs its lifetime
- Maximum productivity with very low maintenance costs
- Flaking cannot stick in grease, no risk of prematurely damaging the crimping head
- End product can be used in sanitary applications without cleaning
- 20% more capability for crimping stronger or more difficult couplings versus our competition's equivalent crimpers
- Consistently accurate crimp result

### CE compliant

We reserve the right to make technical changes without notice. Options are machine parts that can only be ordered while buying the machine.

## Package



GDS 239 B

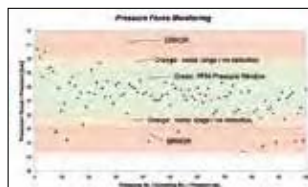


GDC 239.5

- Package = Machine
- + PB Ø 17, 20, 24, 28, 32, 40, 44, 50
- + QDC 239.5
- + GDS 239 B
- + Control C.2

## Pressure Force Monitoring

**PFM – Standard on all machines with C.2 Control**



Quality-enhancing option for series production. With PFM, the upper and lower pressure limits can be set by adjusting the tolerance values obtained from test pressing. Pressures outside these limits are output as errors. It is possible to let the machine switch off at a fixed upper or lower limit, thereby obtaining a higher process safety.

This way you can display and record combinations of incorrect hose and fittings, skipped work stage, such as skiving of the hose or a poorly positioned hose-fitting connection. Achieve integrated quality control without any additional effort.

## Accessories



TU Work Bench



SHS



HM 3 H

Technical data	HM 3 H
Crimp force (kN / Ton)	750 / 75
No grease: 20% less friction	✓
Control	Control C.2 + Touch
SAE R 12 / 4SP* 2 piece fitting*	1"
4 SH* 2 piece fitting*	3/4"
SAE R 15* 2 piece fitting*	3/4"
Industrial*	2"
90° Elbows*	1 1/2"
Max. Crimp range	70 mm
Opening	+ 35 mm
Opening without dies	105 mm
Master dies length (mm)	100 mm
Type of dies	239-xx-Ø-yy
Speed (mm/sec)	
Close	8,3
Crimp	8,3
Open	13,8
Noise level	53 dBA
Drive	5,5 kW
Oil	50 L
L x W x H (mm)	720 x 600 x 672
Weight	193 kg

\* According to the fitting.

Type of dies	
Ø mm	-mm-
6,8	50
9	50
10	50
12	65
14	65
16	65
17	65
19	65
20	65
22	65
24	65
26	65
28	80
30	80
31	80
32	80
36	80
38	80
39	80
40	80
44	80
47	100
50	100
54	100
57	100
62	100

Additional Information



A 90° elbow with long ending is no problem for the UNIFLEX HM 3 H. While our competition still searches, we have the solution.



With our two position holes-system, the insertion of all dies from both sides is easy and quick. You can also choose two different options to position your die set. The HM3H is compact and easily accessible.

Accessories

C.2 Control: Accessories



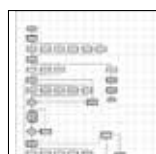
GDS 239 R



TU Rack PB239



Oil Cooler  
OC HM xxx



Customized  
software



Electronic caliper



Calibration mandrel



Barcode scanner



TA (A)



PTS



LUS / LUF



PS Double foot pedal



UTS/UDL



ULS



807.2



Due to their narrow, innovative construction, high level of user friendliness, and long service life, the HM 220 and HM 225 set the standard for quality and cost effectiveness. Their unrivaled accessibility makes ergonomic working possible – optionally from both sides – in production and series manufacture. The tried and tested greaseless slide bearing technology reduces maintenance costs, and the strong crimping force of up to 1400 /1600 kN is rated for widths up to 1¼“.



HM 225

### Engineered solutions using quality components

- Smaller machine increases ergonomics
- HiLo cylinder - Maximum efficiency causing less heat
- Noiseless high-quality pump

### Fixed 6- o'clock die

- Workpiece does not move, making it easier to position laterally
- Increases productivity, driving up profitability
- Reduces risk for injuries

### Slide bearing technology

- No greasing improves cleanliness of machine and prolongs its lifetime
- Maximum productivity with very low maintenance costs
- Flaking cannot stick in grease, no risk of prematurely damaging the crimping head
- End product can be used in sanitary applications without cleaning
- 20% more capability for crimping stronger or more difficult couplings versus our competition's equivalent crimpers
- Consistently accurate crimp result

### CE compliant

We reserve the right to make technical changes without notice. Options are machine parts that can only be ordered while buying the machine.

## Package



GDS 239 B



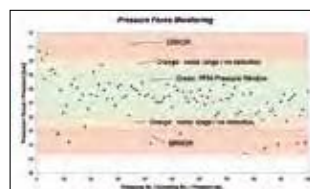
GDC 239.5

Package = Machine

- (HM 225) + PB Ø 17, 20, 24, 28, 32, 40, 44, 47, 50, 62
- (HM 220) + PB Ø 17, 20, 25, 28, 32, 40, 44, 50
- + GDS 239 B + GDC 239.5
- +Control C.2

## Pressure Force Monitoring

**PFM – Standard on all machines with C.2 Control**



Quality-enhancing option for series production. With PFM, the upper and lower pressure limits can be set by adjusting the tolerance values obtained from test pressing. Pressures outside these limits are output as errors. It is possible to let the machine switch off at a fixed upper or lower limit, thereby obtaining a higher process safety. This way you can display and record combinations of incorrect hose and fittings, skipped work stage, such as skiving of the hose or a poorly positioned hose-fitting connection. Achieve integrated quality control without any additional effort.

## Accessories



GDS 239 C



PTS



optional: QDS 239 S

HM 220

HM 225

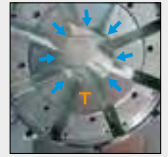
Additional Information



The clear Control C.2 and the optional UTS software provide complete documentation of production data, including the timestamp.



The compact, narrow and ergonomic construction makes working on both sides possible.



The fixed 6- o'clock die makes safe and low-force positioning of the workpiece possible, which improves cost effectiveness as well as safety.

Technical data	HM 220	HM 225
Crimp force (kN / Ton)	1350 / 135	1600 / 160
No grease: 20% less friction	✓	✓
Control	Control C.2 + Touch	Control C.2 + Touch
SAE R 15 / 4SH* 1 piece fitting*	1 1/4"	1 1/4"
4 SH* 2 piece fitting*	1"	1 1/4"
SAE R 15* 2 piece fitting*	1"	1 1/4"
Industrial*	2"	2"
90° Elbows*	1 1/2"	1 1/2"
Max. Crimp range	70 mm	70 mm
Opening	+ 35 mm	+ 40 mm
Opening without dies	105 mm	110 mm
Master dies length (mm)	75 mm	90 mm
Type of dies	239	239 -xx-θ-yy
Speed (mm/sec)		
Close	10	19
Crimp	5	1,5
Open	10	19
Noise level	53 dBA	53 dBA
Drive	5,5 kW	4 kW
Oil	80 L	80 L
L x W x H (mm)	645 x 560 x 1450	645 x 560 x 1470
Weight	310 kg	470 kg

\* According to the fitting

Type of dies	
Ø mm	-mm-
6,8	50
9	50
10	50
12	50
14	50
16	65
17	65
19	65
20	65
22	65
24	65
26	65
28	80
30	80
31	80
32	80
36	80
38	80
39	80
40	80
44	80
47	100
50	100
54	100
57	100
62	100

Type of dies	
Ø mm	-mm-
6,8	
9	50
12	50
14	60
16	60
17	60
19	60
20	60
22	60
24	60
26	75
28	75
30	75
31	75
32	75
36	75
38	75
39	75
40	75
44	75
47	75
50	75
54	75
57	75
62	75

Standard: Half power twice faster included.

Accessories

C.2 Control: Accessories



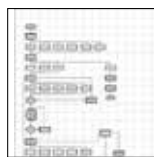
QDS 239 S



QDS 239 R



SHS



Customized software



Electronic caliper



Calibration mandrel



Barcode scanner



TA (A)



LUS / LUF



Oil Cooler  
OC HM xxx



PS Double foot pedal



UTS/UDL



ULS



807.2

As reliable classic machines, the HM 3xx series unites all the outstanding properties of a production crimper. They are compact, powerful and make ergonomic working possible. Combining a convincingly solid construction with a high level of user friendliness, and long service life, the HM 3xx set a new standard for quality and cost effectiveness.



HM 325 | HM 375 | HM 380

### Engineered solutions using quality components

- Smaller machine increases ergonomics
- HiLo cylinder - Maximum efficiency causing less heat
- Noiseless high-quality pump
- Full length of fittings crimped in one stroke increases product quality and production efficiency
- Lateral reinforcement optimizes overall tolerance

### Fixed 6- o'clock die

- Workpiece does not move, making it easier to position laterally
- Increases productivity, driving up profitability
- Reduces risk for injuries

### Slide bearing technology

- No greasing improves cleanliness of machine and prolongs its lifetime
- Maximum productivity with very low maintenance costs
- Flaking cannot stick in grease, no risk of prematurely damaging the crimping head
- End product can be used in sanitary applications without cleaning
- 20% more capability for crimping stronger or more difficult couplings versus our competition's equivalent crimpers
- Consistently accurate crimp result

### CE compliant

We reserve the right to make technical changes without notice. Options are machine parts that can only be ordered while buying the machine.

## Package



GDS 239 B

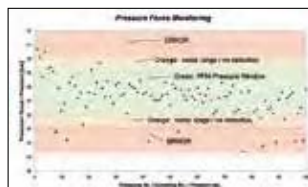


GDC 239.5

- Package = Machine  
 + PB Ø 17, 20, 24, 28, 32, 40, 44, 50, 57, 71  
 + 237.239.2L2  
 + GDC 239.5  
 + GDS 239 B  
 + Control C.2

## Pressure Force Monitoring

**PFM – Standard on all machines with C.2 Control**



Quality-enhancing option for series production. With PFM, the upper and lower pressure limits can be set by adjusting the tolerance values obtained from test pressing. Pressures outside these limits are output as errors. It is possible to let the machine switch off at a fixed upper or lower limit, thereby obtaining a higher process safety.

This way you can display and record combinations of incorrect hose and fittings, skipped work stage, such as skiving of the hose or a poorly positioned hose-fitting connection. Achieve integrated quality control without any additional effort.

## Accessories



PTS



LUS / LUF



HM 325 | HM 375 | HM 380

### Additional Information



The compact, narrow and ergonomic construction makes working on both sides possible.



The fixed 6- o'clock die makes safe and low-force positioning of the workpiece possible, which improves cost effectiveness as well as safety.



With the Barcode Scanner you can scan articles quickly and efficiently.

Technical data	HM 325	HM 375	HM 380
Crimp force (kN / Ton)	2800 / 280	3150 / 315	3400 / 340
No grease: 20% less friction	✓	✓	✓
Control	Control C.2 + Touch	Control C.2 + Touch	Control C.2 + Touch
SAE R 15 / 4SH* 1 piece fitting*	2"	3"	3"
SAE R 15 / 4SH* 2 piece fitting*	2"	2 ½"	3"
Industrial*	4" (6")**	4" (6")**	4" (6")**
90° Elbows*	3"	3"	3"
Max. Crimp range**	165 mm**	165 mm**	165 mm**
Opening	+ 70 mm	+ 70 mm	+ 70 mm
Opening without dies	215 mm	215 mm	215 mm
Master dies length (mm)	126 mm	126 mm	126 mm
Type of dies	237 L / 239-xx	237 L / 239-xx	237 L / 239-xx
Speed (mm/sec)			
Close	23	23	23
Crimp	1,4	1,4	1,3
Open	33	33	33
Noise level	69 dBA	62 dBA	62 dBA
Drive	4 kW	4 kW	4 kW
Oil	100 L	100 L	100 L
L x W x H (mm)	1200 x 600 x 1700	1200 x 600 x 1700	1200 x 600 x 1700
Weight	750 kg	750 kg	750 kg
CGS (Conicity Guard System)	✓	✓	✓
HiDS (High Pressure Pump Dynamic Suction)	✓	✓	✓

Type of dies	
	<b>239-xx-β-yy</b>
Ø mm	-mm-
6,8	50
9	50
10	50
12	65
14	65
16	65
17	65
19	65
20	65
22	65
24	65
26	65
28	80
30	80
31	80
32	80
36	80
38	80
39	80
40	80
44	80
47	100
50	100
54	100
57	100
62	100

Type of dies	
	<b>237 L***</b>
Ø mm	-mm-
54	118
57	118
62	118
67	118
71	118
74	118
78	118
84	118
86	118
90	118
96	118
103	118
106	126
111	126
116	126
121	126
126	126
131	126

\* According to the fitting.  
\*\* With master dies.

## Accessories

## C.2 Control: Accessories



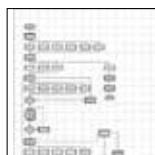
GDS 239 S



GDS 239 C



GDS 239 R



Customized software



Electronic caliper



Calibration mandrel



Barcode scanner



TA (A)



OCS



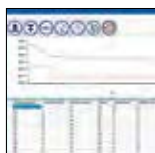
SHS



Oil Cooler OC HM xxx



PS Double foot pedal



UTS/UDL



ULS



807.2



Due to their compact, all-round accessible construction, high level of user friendliness, and long service life, the HM 450, HM 480 and HM 495 set the standard for quality and cost effectiveness. The crimpers' particularly large opening stroke and the use of long master dies allow you to crimp all types of fittings and up to 12" industrial hoses.



HM 480

**Engineered solutions using quality components**

- Compact machine for ergonomic work
- HiLo cylinder - Maximum efficiency causing less heat
- Noiseless high-quality pump
- Long master dies to crimp all types of workpieces
- Full length of fittings crimped in one stroke increases product quality and production efficiency

**Fixed 6- o'clock die**

- Workpiece does not move, making it easier to position laterally
- Increases productivity, driving up profitability
- Reduces risk for injuries

**Slide bearing technology**

- No greasing improves cleanliness of machine and prolongs its lifetime
- Maximum productivity with very low maintenance costs
- Flaking cannot stick in grease, no risk of prematurely damaging the crimping head
- End product can be used in sanitary applications without cleaning
- 20% more capability for crimping stronger or more difficult couplings versus our competition's equivalent crimpers
- Consistently accurate crimp result

**CE compliant**

We reserve the right to make technical changes without notice. Options are machine parts that can only be ordered while buying the machine.

**Package**



GDS 239 B

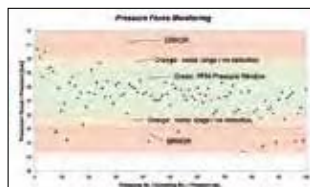


GDC 239.5

- Package = Machine
- + PB Ø 17,20,24,28,32,40,44,50,57,71
- + 237.239.2L2 + 245.237L
- + GDC 239.5 + GDS 239 B
- + Control C.2

**Pressure Force Monitoring**

**PFM – Standard on all machines with C.2 Control**



Quality-enhancing option for series production. With PFM, the upper and lower pressure limits can be set by adjusting the tolerance values obtained from test pressing. Pressures outside these limits are output as errors. It is possible to let the machine switch off at a fixed upper or lower limit, thereby obtaining a higher process safety.

This way you can display and record combinations of incorrect hose and fittings, skipped work stage, such as skiving of the hose or a poorly positioned hose-fitting connection. Achieve integrated quality control without any additional effort.

**Accessories**



PTS



Oil Cooler  
OC HM xxx



HM 450

HM 480 | HM 495

Additional Information



Due to the long master dies, you can crimp virtually all types of fittings.



The machines are very compact and narrow for a better work environment.

Technical data	HM 450	HM 480	HM 495
Crimp force (kN / Ton)	4000/400	4500/450	6000/600
No grease: 20% less friction	✓	✓	✓
Control	Control C.2 + Touch	Control C.2 + Touch	Control C.2 + Touch
SAE R 15 / 4SH* 1 piece fitting	3"	3"	3"
SAE R 15 / 4SH* 2 piece fitting	3"	3"	3"
Industrial	6" (12")**	8" (12")**	8" (12")**
Elbows	3"	3"	3"
Max. Crimp range	310 mm	310 mm	310 mm
Opening	+ 130	+ 150	+ 150
Opening without dies	360 mm	380 mm	380 mm
Master dies length (mm)	150 mm	150 mm	150 mm
Type of dies	245 / 237L / 239-xx-Ø-yy	245 / 237L / 239-xx-Ø-yy	245 / 237L / 239-xx-Ø-yy
Speed (mm/sec)			
Close	19	18	17
Crimp	1,4	1,3	1
Open	33	20	20
Noise level	62 dBA	62 dBA	62 dBA
Drive	5,5 kW	5,5 kW	5,5 kW
Oil	300 L	300 L	300 L
L x W x H (mm)	730 x 1590 x 1915	730 x 1590 x 2015	730 x 1590 x 2080
Weight	2600 kg	2600 kg	2700 kg
HiDS (High Pressure Pump Dynamic Suction)	✓	✓	✓

\* Special dies (reduced opening).

\*\* Pipe fittings without flange.

Type of dies	
	<b>239-xx-Ø-yy</b>
Ø mm	-mm-
6,8	50
9	50
10	50
12	65
14	65
16	65
17	65
19	65
20	65
22	65
24	65
26	65
28	80
30	80
31	80
32	80
36	80
38	80
39	80
40	80
44	80
47	100
50	100
54	100
57	100
62	100

Type of dies	
	<b>237 L / 245</b>
Ø mm	-mm-
54	118
57	118
62	118
67	118
71	118
74	118
78	118
84	118
86	118
90	118
96	118
103	118 / 130
106	126 / 130
111	126 / 130
116	126 / 130
121	126 / 130
126	126 / 130
131	126 / 130
136	130
146	150
156	150
170	150
185	150
200	150
230*	220
265*	220
275*	220
305*	220

Accessories

C.2 Control: Accessories



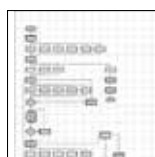
GDS 239 S



GDS 239 C



GDS 239 R



Customized software



Electronic caliper



Calibration mandrel



Barcode scanner



TA (A)



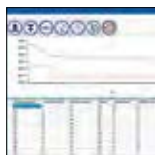
OCS



LUS / LUF



PS Double foot pedal



UTS/UDL



ULS



807.2

With their distinctive construction and high crimping force of up to 12000 kN, the HM 660, HM 665 and HM 1200 are one of UNIFLEX's powerhouses. They set the standard for quality and cost effectiveness. Using one of these models, you can easily crimp up to 12" industrial hoses (according to the fitting).



HM 665

**Engineered solutions using quality components**

- Smaller machine increases ergonomics
- HiLo cylinder - Maximum efficiency causing less heat
- Noiseless high-quality pump
- Full length of fittings crimped in one stroke increases product quality and production efficiency
- Lateral reinforcement optimizes overall tolerance

**Fixed 6- o'clock die**

- Workpiece does not move, making it easier to position laterally
- Increases productivity, driving up profitability
- Reduces risk for injuries

**Slide bearing technology**

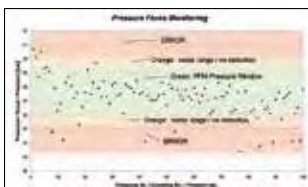
- No greasing improves cleanliness of machine and prolongs its lifetime
- Maximum productivity with very low maintenance costs
- Flaking cannot stick in grease, no risk of prematurely damaging the crimping head
- End product can be used in sanitary applications without cleaning
- 20% more capability for crimping stronger or more difficult couplings versus our competition's equivalent crimpers
- Consistently accurate crimp result

**CE compliant**

We reserve the right to make technical changes without notice. Options are machine parts that can only be ordered while buying the machine.

## Pressure Force Monitoring

PFM – Standard on all machines with C.2 Control



Quality-enhancing option for series production. With PFM, the upper and lower pressure limits can be set by adjusting the tolerance values obtained from test pressing.

Pressures outside these limits are output as errors. It is possible to let the machine switch off at a fixed upper or lower limit, thereby obtaining a higher process safety.

This way you can display and record combinations of incorrect hose and fittings, skipped work stage, such as skiving of the hose or a poorly positioned hose-fitting connection. Achieve integrated quality control without any additional effort.



HM 660 | HM 1200

HM 665

### Additional Information



Due to the long master dies, you can crimp virtually all types of fittings.

The fixed 6-o'clock die makes safe and low-force positioning of the workpiece possible, which improves cost effectiveness as well as safety.

Technical data	HM 660	HM 665	HM 1200
Crimp force (kN / Ton)	8000 / 800	6000 / 600	12000 / 1200
No grease: 20% less friction	✓	✓	✓
Control	Control C.2 + Touch	Control C.2 + Touch	Control C.2 + Touch
SAE R 15 / 4SH* 1 piece fitting	3"	3"	3"
SAE R 15 / 4SH* 2 piece fitting	3"	3"	3"
Industrial	10"	12" / 16**	10"
90° Elbows	3"	3"	3"
Max. Crimp range	325 mm**	450 mm**	325 mm**
Opening	+ 120 mm	+ 180 mm	+ 120 mm
Opening without dies	395 mm	580 mm	395 mm
Master dies length (mm)	200 mm	250 mm	200 mm
Type of dies	246 / 237L / 239-xx-Ø-yy	298 / 245 / 237L / 239-xx-Ø-yy	246 / 237L / 239-xx-Ø-yy
Speed (mm/sec)			
Close	15	17	11
Crimp	2	0,9	1,5
Open	15	25	11
Noise level	69 dBA	69 dBA	69 dBA
Drive	18,5 kW	5,5 kW	18,5 kW
Oil	300 L	400 L	300 L
L x W x H (mm)   Machine + Power Unit	1400 x 1050 x 2470	1800 x 970 x 2400	1400 x 1130 x 2660
L x W x H (mm)   Machine + Power Unit	700 x 1160 x 1360	integrated	1100 x 1300 x 1500
Weight	4200 kg + 450 kg	5200 kg	4480 kg + 450 kg
HiDS (High Pressure Pump Dynamic Suction)	✓	✓	✓

\* Layflat hoses with special dies.

\*\* According to the fitting.

Type of dies	
<b>239-xx-Ø-yy</b>	
Ø mm	-mm-
6,8	50
9	50
10	50
12	65
14	65
16	65
17	65
19	65
20	65
22	65
24	65
26	65
28	80
30	80
31	80
32	80
36	80
38	80
39	80
40	80
44	80
47	100
50	100
54	100
57	100
62	100

Type of dies	
<b>237 L</b>	
<b>246**</b>	
Ø mm	-mm-
54	118
57	118
62	118
67	118
71	118
74	118
78	118
84	118
86	118
90	118
96	118
103	118
106	126
111	126
116	126
121	126
126	126
131	126
136**	150
146**	150
156**	150
170**	170
185**	200
200**	200
215**	200
230**	200
245**	200
260**	200

Type of dies	
<b>298</b>	
Ø mm	-mm-
200	250
220	250
240	250
260	250
280	250
300	250
320	250
340	250
360	250
380	250

Type of dies	
<b>245</b>	
Ø mm	-mm-
103	130
106	130
111	130
116	130
121	130
126	130
131	130
136	130
146	150
156	150
170	150
185	150
200	150

## Accessories

## C.2 Control: Accessories



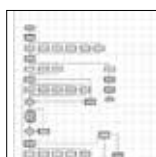
PTS



GDS 239 C



GDS 239 R



Customized software



Electronic caliper



Calibration mandrel



Barcode scanner



TA (A)



OCS



LUS / LUF



Oil Cooler  
OC HM xxx



PS Double foot pedal



UTS/UDL



ULS



807.2